



Risk Assessment

Mapping Risks for a Clearer Roadmap

Your organization's risk and returns must be seriously considered to achieve the appropriate balance and provide the foundation for stable growth. Untreated risk and inadequately controlled environments are conditions for loss. In today's regulatory environment, it has become increasingly imperative that regular risk assessments are conducted to meet compliance demands.

Our team of IT Risk Pros have years of experience specializing in cybersecurity. We keep up-to-date with the latest technological innovations to offer you the best professional knowledge. We offer a wide range of risk assessment services tailored to the size of your IT environment. Our complete portfolio of risk assessment services includes:



HIGHLIGHTS

Greater Insight

Thoroughly understand the risks your company faces due to the underlying IT infrastructure and business processes.

Detailed Evaluation of Risk Exposure

Provide insurance underwriters the information needed to evaluate the risk level of the insured

Promote a risk-aware culture

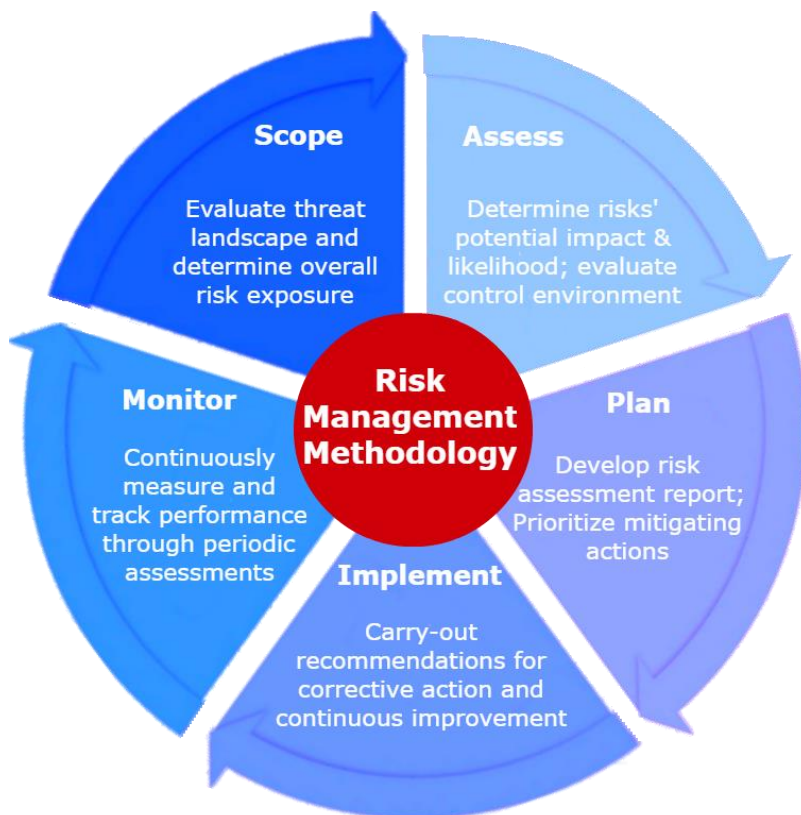
Raising risk awareness throughout the enterprise, from senior management to staff

Independent Measure of Risk

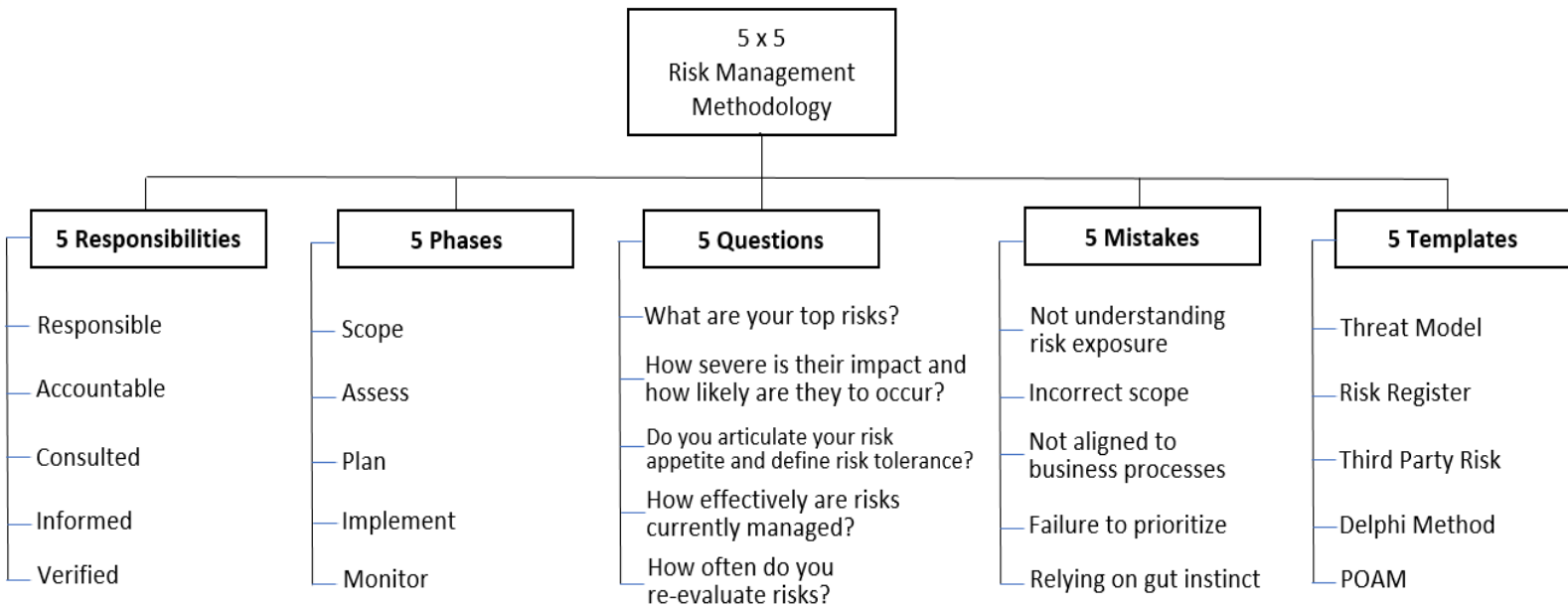
Review how well the organization is protected by people, processes and technology

Streamlined Reporting

Map risks to business processes and controls



Our IT Risk Pros utilize a proprietary risk management methodology to identify overall risk, reduce residual risk and maximize upside potential. Our methodology is designed to systematically manage and regularly update risk profiles, address uncertainty, and facilitate continuous improvement.



To view our full portfolio of products and services, visit www.itriskpros.com/services

- [Vulnerability Assessment](#)
- [Penetration Testing](#)
- [IT Audit](#)
- [Risk Assessment](#)



ITRiskpros.com
Risk Management Cybersecurity Experts



888.811.RISK (7475)



Nathaniel Kunst
(786) 817-8729

NKunst@itriskpros.com

Government POC

Don Ryan
(305) 388-3735

DRyan@itriskpros.com

Risk Management Forecasting, LLC
611 W. May Street

Mt. Pleasant, MI 48858

“Forecasting the Digital Revolution”